

Latest Stable Version (Community Edition)

This is the most recent stable release, and the recommended version for all installations. For upgrade information, see the [Upgrade Guide](#). For pre-configured systems, see the pfSense appliances on [Netgate](#).

[RELEASE NOTES](#)[SOURCE CODE](#)

Select Image To Download

Version:

Architecture:

Mirror:

[DOWNLOAD](#)

Supported by

[SHA256 Checksums](#) for compressed (.gz) files

Subscribe To The Netgate Newsletter

Product information, software announcements, and special offers. See our [newsletter archive](#) for past announcements.

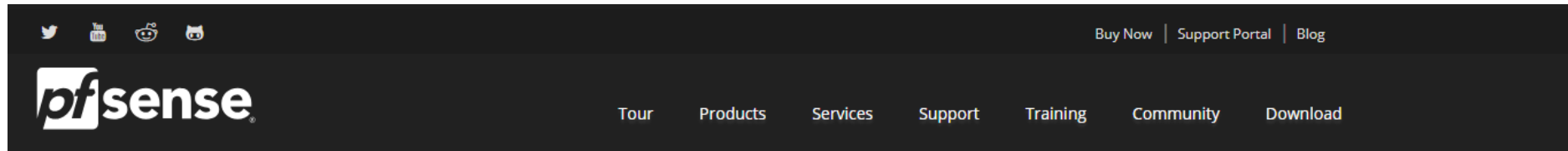
Email*

 I understand I am signing up to receive the newsletter, software announcements, and special offers from Netgate.*[Subscribe](#)[\(view our privacy policy\)](#)

PoliForma pfSense Router 1 (PFRT1)


HW Hilgersom


DOWNLOAD PFSENSE



Latest Stable Version (Community Edition)


This is the most recent stable release, and the recommended version for all installations. For upgrade information, see the [Upgrade Guide](#). For pre-configured systems, see the pfSense appliances on [Netgate](#).

 [RELEASE NOTES](#)

 [SOURCE CODE](#)

Select Image To Download

Version:

Architecture: 

Mirror:

 [DOWNLOAD](#)



[SHA256 Checksums](#) for compressed (.gz) files

Subscribe To The Netgate Newsletter

Product information, software announcements, and special offers. See our [newsletter archive](#) for past announcements.

Email*

I understand I am signing up to receive the newsletter, software announcements, and special offers from Netgate.*

[Subscribe](#)

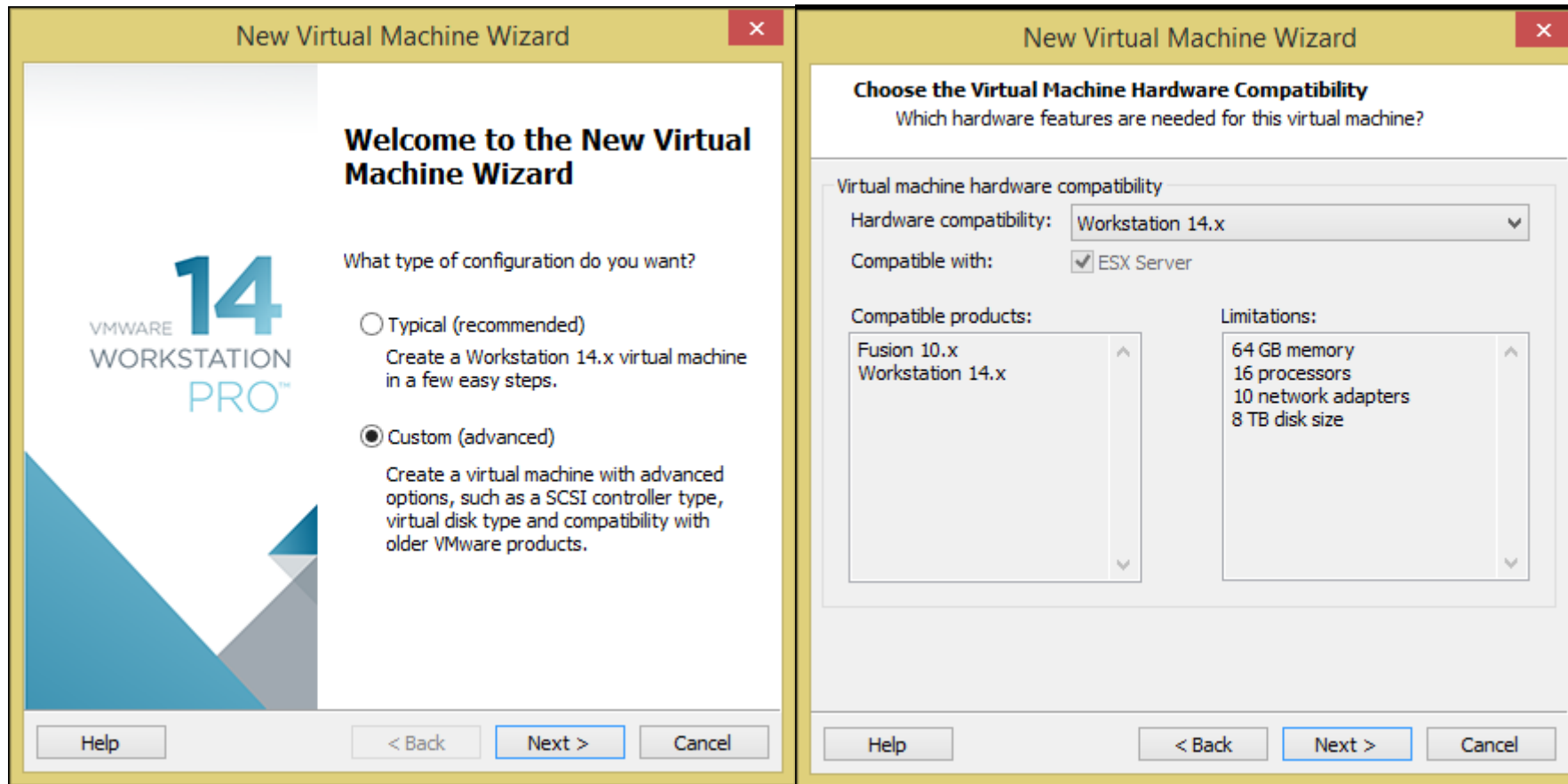
[\(view our privacy policy\)](#)

AMD64.ISO

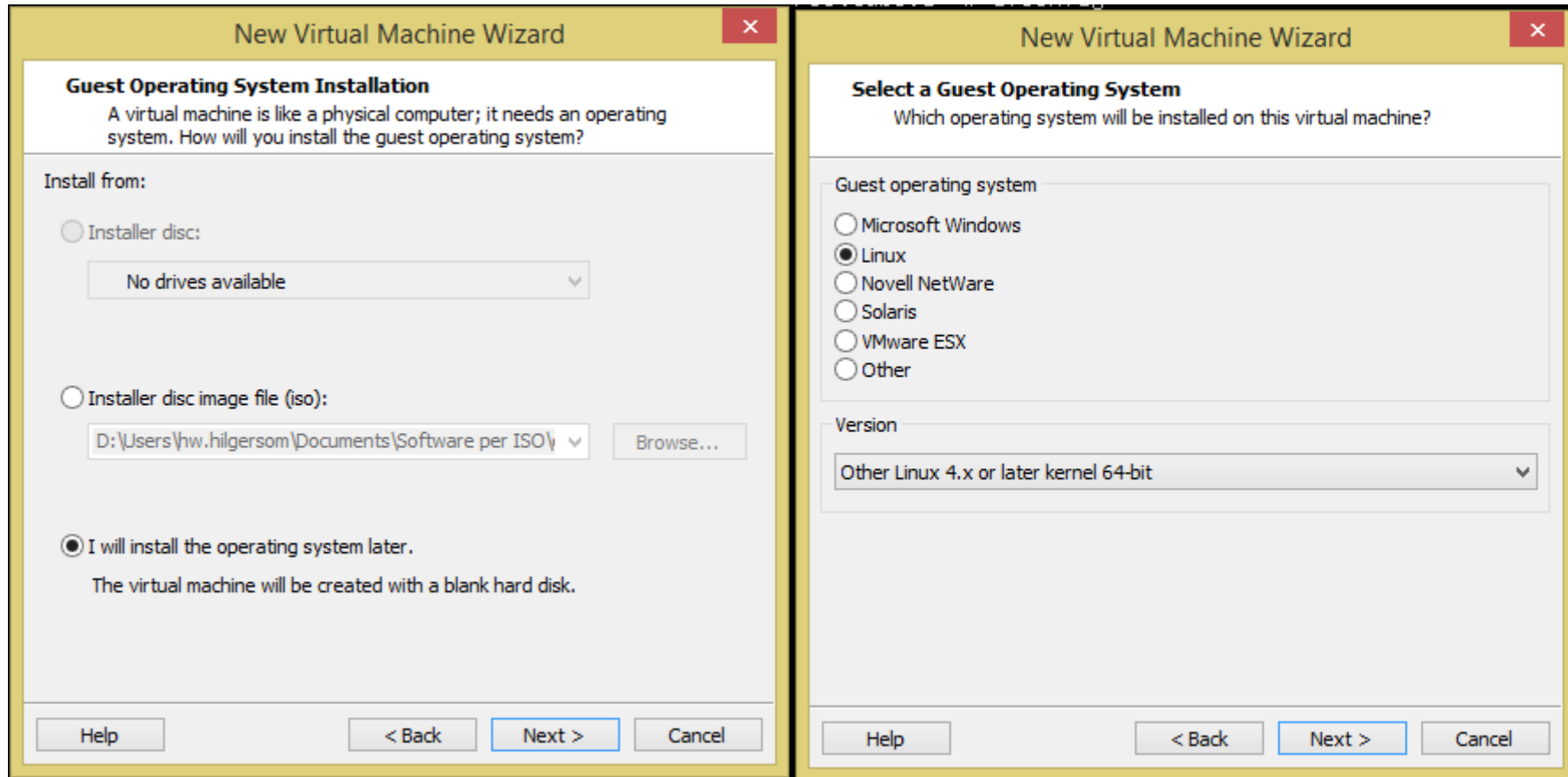
Index of /mirror/downloads/

../			
old/	29-Mar-2018 17:50		-
pfSense-CE-2.3.5-RELEASE-2g-amd64-nanobsd-vga.i...>	01-Nov-2017 14:36	378990058	
pfSense-CE-2.3.5-RELEASE-2g-amd64-nanobsd-vga.i...>	01-Nov-2017 14:36		129
pfSense-CE-2.3.5-RELEASE-2g-amd64-nanobsd.img.gz	01-Nov-2017 14:36	378980926	
pfSense-CE-2.3.5-RELEASE-2g-amd64-nanobsd.img.g...>	01-Nov-2017 14:36		125
pfSense-CE-2.3.5-RELEASE-2g-i386-nanobsd-vga.im...>	01-Nov-2017 14:36	356719906	
pfSense-CE-2.3.5-RELEASE-2g-i386-nanobsd-vga.im...>	01-Nov-2017 14:36		128
pfSense-CE-2.3.5-RELEASE-2g-i386-nanobsd.img.gz	01-Nov-2017 14:36	356236487	
pfSense-CE-2.3.5-RELEASE-2g-i386-nanobsd.img.gz...>	01-Nov-2017 14:36		124
pfSense-CE-2.3.5-RELEASE-4g-amd64-nanobsd-vga.i...>	01-Nov-2017 14:36	382559242	
pfSense-CE-2.3.5-RELEASE-4g-amd64-nanobsd-vga.i...>	01-Nov-2017 14:36		129
pfSense-CE-2.3.5-RELEASE-4g-amd64-nanobsd.img.gz	01-Nov-2017 14:37	382598541	
pfSense-CE-2.3.5-RELEASE-4g-amd64-nanobsd.img.g...>	01-Nov-2017 14:37		125
pfSense-CE-2.3.5-RELEASE-4g-i386-nanobsd-vga.im...>	01-Nov-2017 14:37	360304171	
pfSense-CE-2.3.5-RELEASE-4g-i386-nanobsd-vga.im...>	01-Nov-2017 14:37		128
pfSense-CE-2.3.5-RELEASE-4g-i386-nanobsd.img.gz	01-Nov-2017 14:37	359957405	
pfSense-CE-2.3.5-RELEASE-4g-i386-nanobsd.img.gz...>	01-Nov-2017 14:37		124
pfSense-CE-2.3.5-RELEASE-amd64.iso.gz	31-Oct-2017 22:04	325518466	
pfSense-CE-2.3.5-RELEASE-amd64.iso.gz.sha256	31-Oct-2017 22:04		114
pfSense-CE-2.3.5-RELEASE-i386.iso.gz	31-Oct-2017 22:05	309142332	
pfSense-CE-2.3.5-RELEASE-i386.iso.gz.sha256	31-Oct-2017 22:05		113
pfSense-CE-2.4.3-RELEASE-amd64.iso.gz	29-Mar-2018 12:58	319675629	
pfSense-CE-2.4.3-RELEASE-amd64.iso.gz.sha256	29-Mar-2018 12:59		114
pfSense-CE-memstick-2.3.5-RELEASE-amd64.img.gz	31-Oct-2017 22:05	330289598	
pfSense-CE-memstick-2.3.5-RELEASE-amd64.img.gz...>	31-Oct-2017 22:05		123
pfSense-CE-memstick-2.3.5-RELEASE-i386.img.gz	31-Oct-2017 22:05	313465908	
pfSense-CE-memstick-2.3.5-RELEASE-i386.img.gz.s...>	31-Oct-2017 22:05		122
pfSense-CE-memstick-2.4.3-RELEASE-amd64.img.gz	29-Mar-2018 12:58	320532839	
pfSense-CE-memstick-2.4.3-RELEASE-amd64.img.gz...>	29-Mar-2018 12:59		123
pfSense-CE-memstick-ADI-2.3.5-RELEASE-amd64.img.gz	31-Oct-2017 22:05	330251806	
pfSense-CE-memstick-ADI-2.3.5-RELEASE-amd64.img...>	31-Oct-2017 22:05		127
pfSense-CE-memstick-ADI-2.4.3-RELEASE-amd64.img.gz	29-Mar-2018 12:59	321137973	
pfSense-CE-memstick-ADI-2.4.3-RELEASE-amd64.img...>	29-Mar-2018 12:59		127
pfSense-CE-memstick-serial-2.3.5-RELEASE-amd64...>	31-Oct-2017 22:05	330254906	
pfSense-CE-memstick-serial-2.3.5-RELEASE-amd64...>	31-Oct-2017 22:05		130
pfSense-CE-memstick-serial-2.3.5-RELEASE-i386.i...>	31-Oct-2017 22:06	313454422	
pfSense-CE-memstick-serial-2.3.5-RELEASE-i386.i...>	31-Oct-2017 22:06		129
pfSense-CE-memstick-serial-2.4.3-RELEASE-amd64...>	29-Mar-2018 12:59	321050658	
pfSense-CE-memstick-serial-2.4.3-RELEASE-amd64...>	29-Mar-2018 12:59		130

NEW VIRTUAL MACHINE



LINUX, OTHER ...



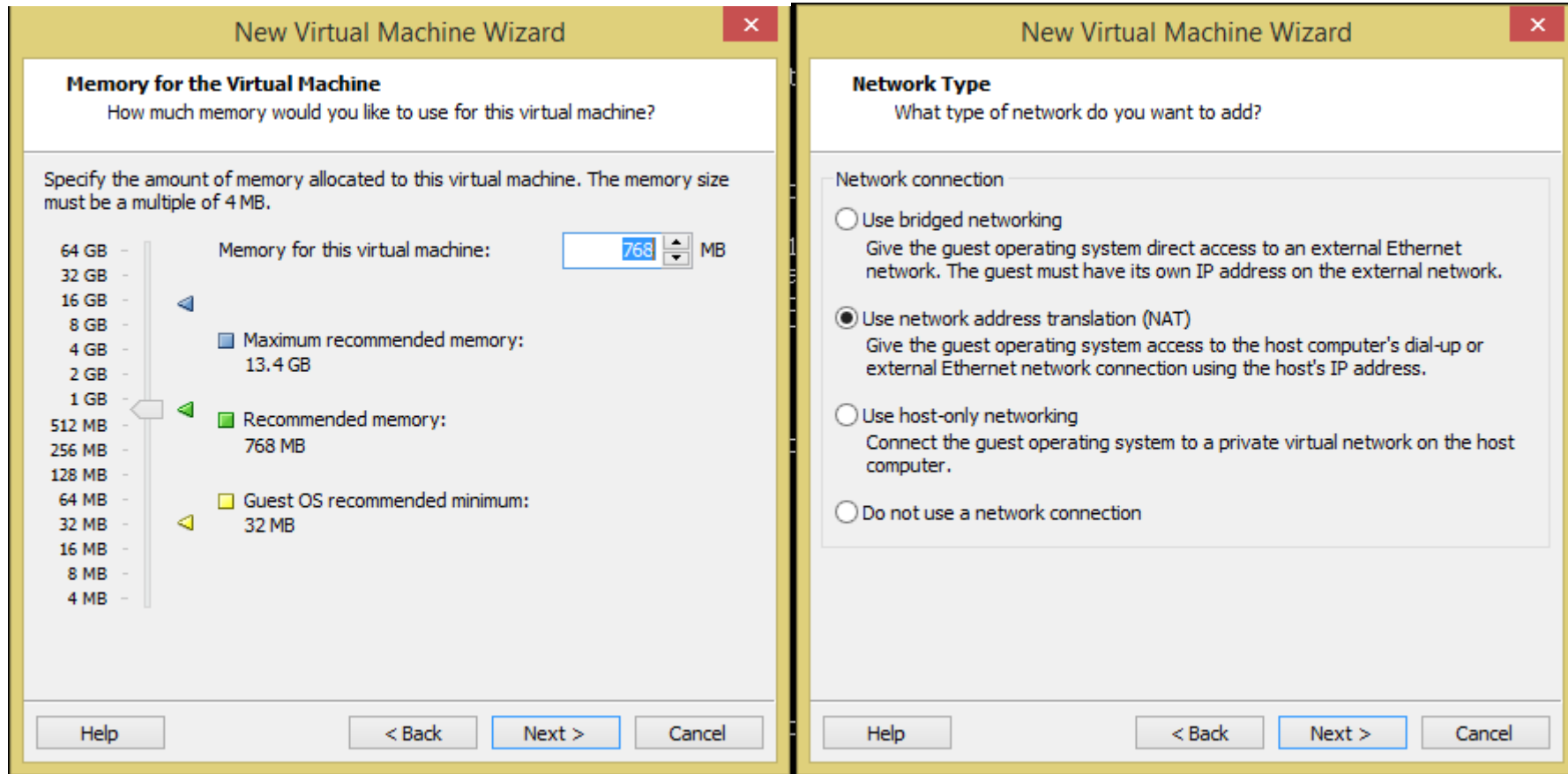
PFRT1 (PoliForma Router 1)

The image displays two sequential steps of the 'New Virtual Machine Wizard' in a software application. Both windows have a yellow title bar and a red close button in the top right corner.

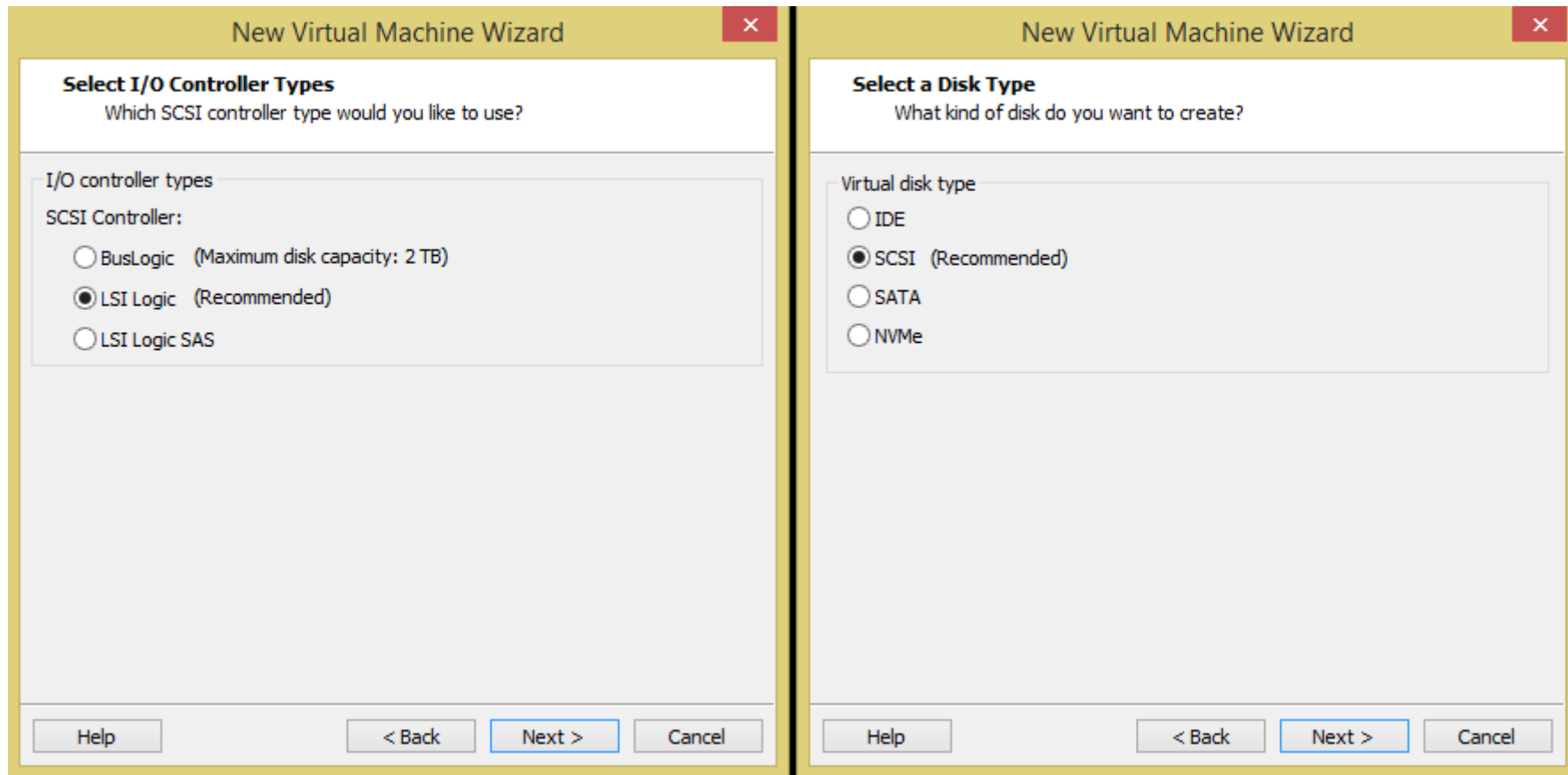
Left Window: Name the Virtual Machine
The title bar reads 'New Virtual Machine Wizard'. The main heading is 'Name the Virtual Machine' with the instruction 'What name would you like to use for this virtual machine?'. Below this, there are two input fields: 'Virtual machine name:' containing 'PFRT1' and 'Location:' containing 'D:\Users\hw.hilgersom\Documents\Virtual Machines\PFRT1'. A 'Browse...' button is next to the location field. A note at the bottom states 'The default location can be changed at Edit > Preferences.' The bottom navigation bar includes '< Back', 'Next >', and 'Cancel' buttons.

Right Window: Processor Configuration
The title bar reads 'New Virtual Machine Wizard'. The main heading is 'Processor Configuration' with the instruction 'Specify the number of processors for this virtual machine.'. Below this, there is a section titled 'Processors' containing three rows of configuration options: 'Number of processors:' with a dropdown menu set to '1', 'Number of cores per processor:' with a dropdown menu set to '1', and 'Total processor cores:' with the value '1'. The bottom navigation bar includes 'Help', '< Back', 'Next >', and 'Cancel' buttons.

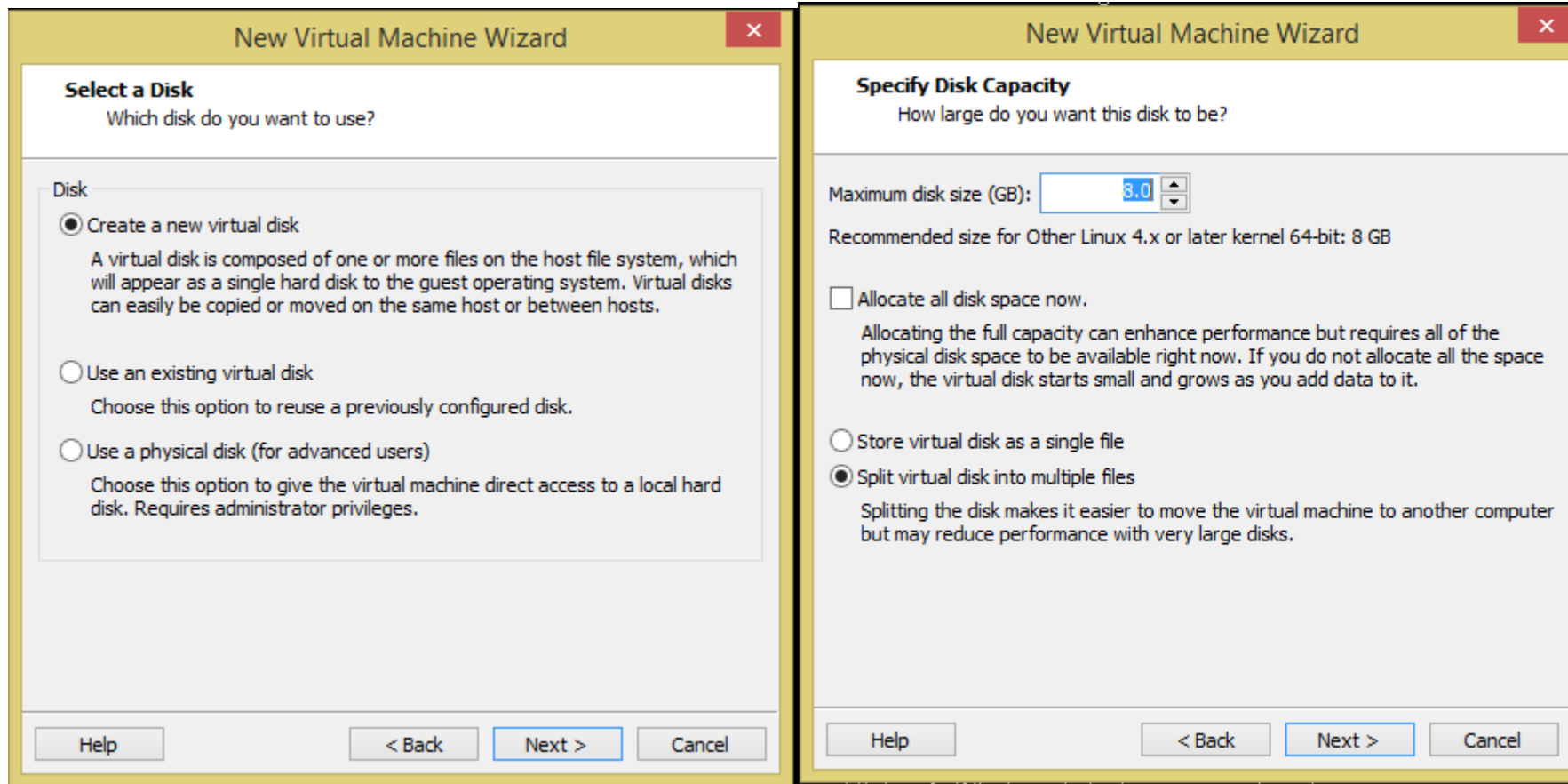
DEFAULT



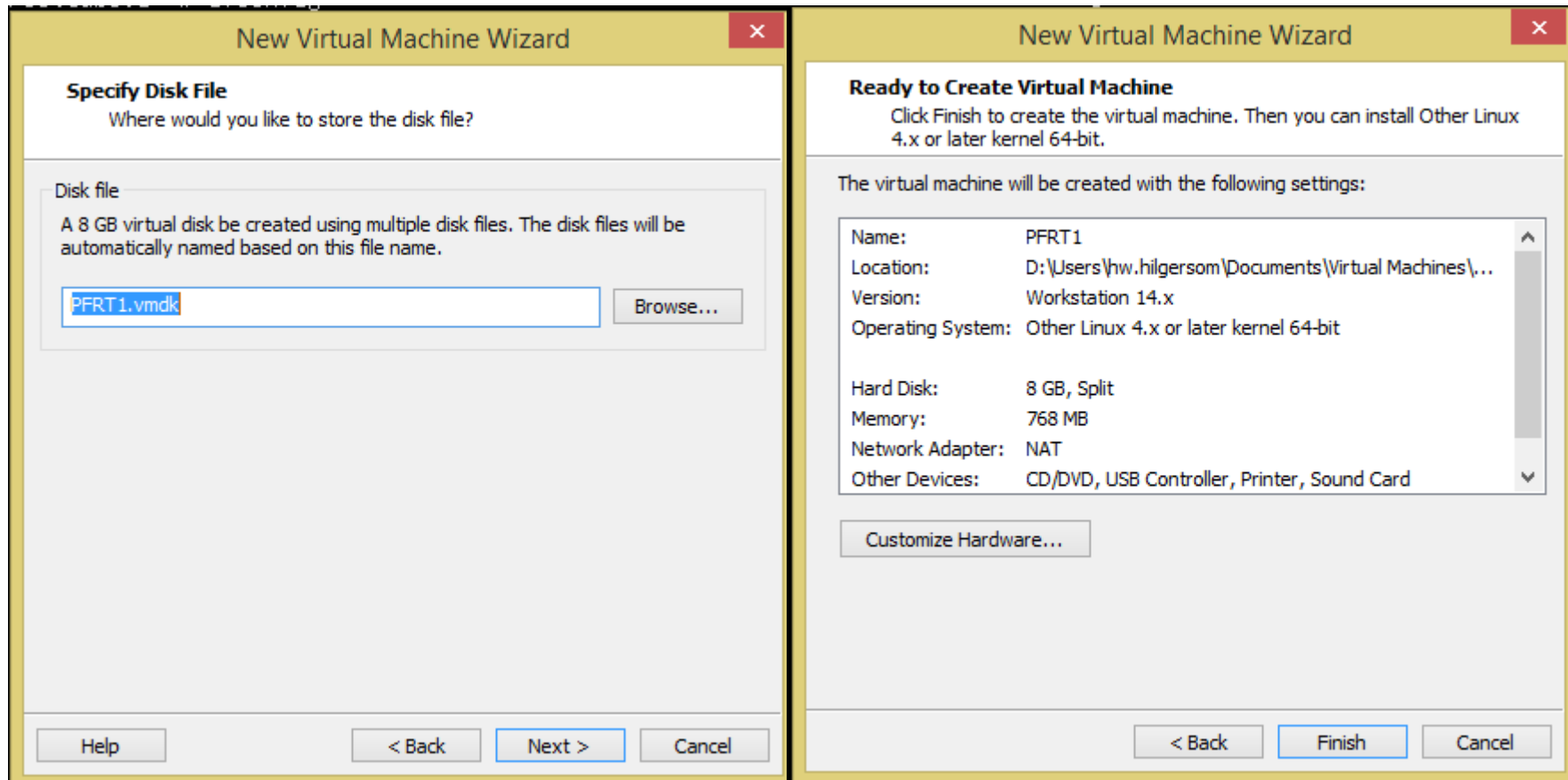
DEFAULT



DEFAULT



DEFAULT



Add ... Network Adapter

PFRT1

▶ Power on this virtual machine

🔧 Edit virtual machine settings

Devices

Memory	768 MB
Processors	1
Hard Disk (SCSI)	8 GB
CD/DVD (IDE)	Auto detect
Network Adapter	NAT
USB Controller	Present
Sound Card	Auto detect
Printer	Present
Display	Auto detect

Description

Type here to enter a description of this virtual machine.

Virtual Machine Settings

Hardware Options

Device	Summary
Memory	768 MB
Processors	1
Hard Disk (SCSI)	8 GB
CD/DVD (IDE)	Auto detect
Network Adapter	NAT
USB Controller	Present
Sound Card	Auto detect
Printer	Present
Display	Auto detect

Memory

Specify the amount of memory allocated to this virtual machine. The memory size must be a multiple of 4 MB.

Memory for this virtual machine: 768 MB

Add... Remove

OK Cancel Help

Add Hardware Wizard

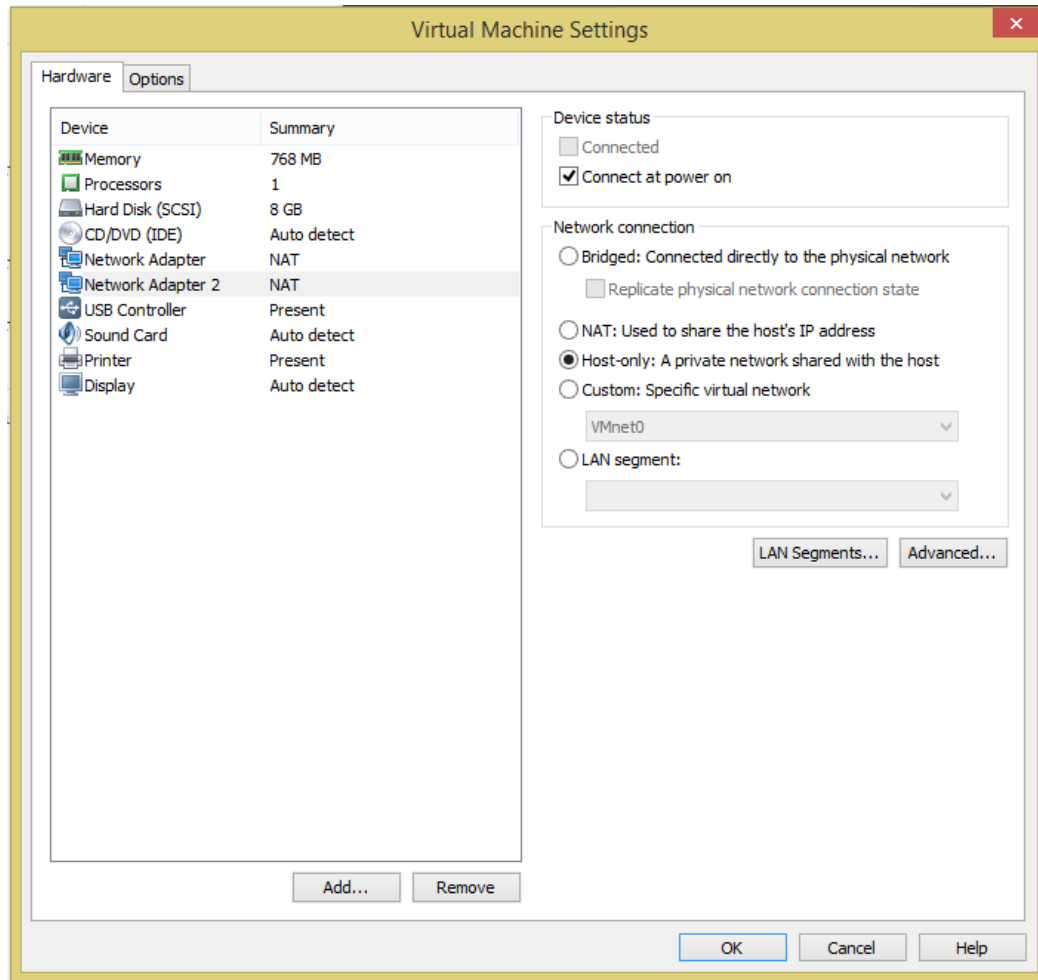
Hardware Type

What type of hardware do you want to install?

Hardware types:	Explanation
Hard Disk	Add a network adapter.
CD/DVD Drive	
Floppy Drive	
Network Adapter	
USB Controller	
Sound Card	
Parallel Port	
Serial Port	
Printer	
Generic SCSI Device	
Trusted Platform Module	

Finish Cancel

Host-only



SELECT ISO FROM DOCUMENTS OR DOWNLOADS

▶ Power on this virtual machine

🔧 Edit virtual machine settings

Devices

Memory	1 GB
Processors	1
Hard Disk (SCSI)	20 GB
CD/DVD (SATA)	Auto detect
Network Adapter	NAT
USB Controller	Present
Sound Card	Auto detect
Printer	Present
Display	Auto detect

Description

Type here to enter a description of this virtual machine.

The screenshot shows the 'Virtual Machine Settings' dialog box with the 'Hardware' tab selected. The 'CD/DVD (SATA)' device is highlighted in the device list. The 'Connection' section is expanded, showing the 'Use ISO image file' option selected. The file path is 'D:\Users\hw.hilgersom\Downloads\'. There is a 'Browse...' button next to the path. The 'Device status' section shows 'Connect at power on' checked. At the bottom of the dialog, there are 'Add...', 'Remove', 'OK', 'Cancel', and 'Help' buttons.

Device	Summary
Memory	1 GB
Processors	1
Hard Disk (SCSI)	20 GB
CD/DVD (SATA)	Auto detect
Network Adapter	NAT
USB Controller	Present
Sound Card	Auto detect
Printer	Present
Display	Auto detect

Device status

Connected
 Connect at power on

Connection

Use physical drive:
Auto detect

Use ISO image file:
D:\Users\hw.hilgersom\Downloads\ Browse...

Advanced...

Add... Remove

OK Cancel Help

DEFAULT

F10=Refresh Display

Configure Console

Your selected environment uses the following console settings, shown in parentheses. Select any that you wish to change.

- < Change Video Font (default) >
- < Change Screenmap (default) >
- < Change Keymap (default) >
- < Accept these Settings >

Custom Install

F10=Refresh Display

Select Task

Choose one of the following tasks to perform.

- < Quick/Easy Install >
- < **Custom Install** >
- < Rescue config.xml >
- < Reboot >
- < Exit >

Perform a custom installation of pfSense on this computer system

DEFAULT

F10=Refresh Display

Select a Disk

Select a disk on which to install pfSense.

< da0: <UMware, UMware Virtual S 1.0> Fixed Direct Access SCSI-2 device >
< Return to Select Task >

DEFAULT

F10=Refresh Display

Format this Disk?

Would you like to format this disk?

You should format the disk if it is new, or if you wish to start from a clean slate. You should NOT format the disk if it contains information that you want to keep.

< Format this Disk > < Skip this step >
< Return to Select Disk >

DEFAULT

F10=Refresh Display

Select Geometry

The system reports that the geometry of da0 is
1044 cylinders, 255 heads, 63 sectors

This geometry should enable you to boot from this
disk. Unless you have a pressing reason to do
otherwise, it is recommended that you use it.

If you don't understand what any of this means,
just select 'Use this Geometry' to continue.

Cylinders	[1044]
Heads	[255]
Sectors	[63]

< Use this Geometry > < Return to Select Disk >

DEFAULT

F10=Refresh Display

ABOUT TO FORMAT! Proceed?

WARNING! ALL data in ALL partitions on the
disk

da0: <UMware, UMware Virtual S 1.0> Fixed
Direct Access SCSI-2 device

will be IRREVOCABLY ERASED!

Are you ABSOLUTELY SURE you wish to take
this action? This is your LAST CHANCE to
cancel!

< Format da0 > < Return to Select Disk >

DEFAULT

F10=Refresh Display

Partition Disk?

You may now partition this disk if you desire.

If you formatted this disk, and would now like to install multiple operating systems on it, you can reserve a part of the disk for each of them here. Create multiple partitions, one for each operating system.

If this disk already has operating systems on it that you wish to keep, you should be careful not to change the partitions that they are on, if you choose to partition.

Partition this disk?

< Partition Disk > < Skip this Step > < Return to Format Disk >

Accept and Create

F10=Refresh Display

Edit Partitions

Select the partitions (also known as 'slices' in BSD tradition) you want to have on this disk.

For Size, enter a raw size in sectors (1 gigabyte = 2097152 sectors) or a single '*' to indicate 'use the remaining space on the disk'.

Size (in Sectors)	Partition Type	Active?
-------------------	----------------	---------

[16771797]	[FreeBSD]	[X]
------------	-----------	-----

< Ins > < Del >

< Add >

< Accept and Create > < Return to Format Disk >

< Revert to Partitions on Disk >

DEFAULT

F10=Refresh Display

Partition Anyway?

No changes appear to have been made to the partition table layout.

Do you want to execute the commands to partition the disk anyway?

< Yes, partition da0 > < No, Skip to Next Step >
< No, Return to Edit Partitions >

OK

F10=Refresh Display

Information

The disk

da0: <UMware, UMware Virtual S 1.0>
Fixed Direct Access SCSI-2 device

was successfully partitioned.

< OK >

Accept and Install Bootblocks

Install Bootblock(s)

You may now wish to install bootblocks on one or more disks. If you already have a boot manager installed, you can skip this step (but you may have to configure your boot manager separately.) If you wish to install pfSense on a disk other than your first disk, you will need to put the bootblock on at least your first disk and the pfSense disk.

Disk Drive	Install Bootblock?	Packet mode?
[da0] [X]	[]
[] [X]	[]

< Accept and Install Bootblocks > < Skip this Step >
< Accept and Install Bootblocks > on Disk >

Press F1 for Help

OK

Install Bootblock(s)

Information

Bootblocks were successfully installed!

< OK >

DEFAULT

Install Bootblock(s)

Select a Partition

Select the primary partition of da0
(also known as a 'slice' in the BSD
tradition) on which to install pfSense.

< 1: 7.99G (63-16771860) id=165 >

< Return to Install Bootblocks >

OK

Are you SURE?

WARNING! ALL data in primary partition
#1,

1: 7.99G (63-16771860) id=165

on the disk

da0: <UMware, UMware Virtual S 1.0>
Fixed Direct Access SCSI-2 device

will be IRREVOCABLY ERASED!

Are you ABSOLUTELY SURE you wish to
take this action? This is your LAST
CHANCE to cancel!

< OK > < Cancel >

OK

Information

Primary partition #1 was formatted.

< OK >

Accept and Create

Select Subpartitions

Set up the subpartitions (also known as just 'partitions' in BSD tradition) you want to have on this primary partition.

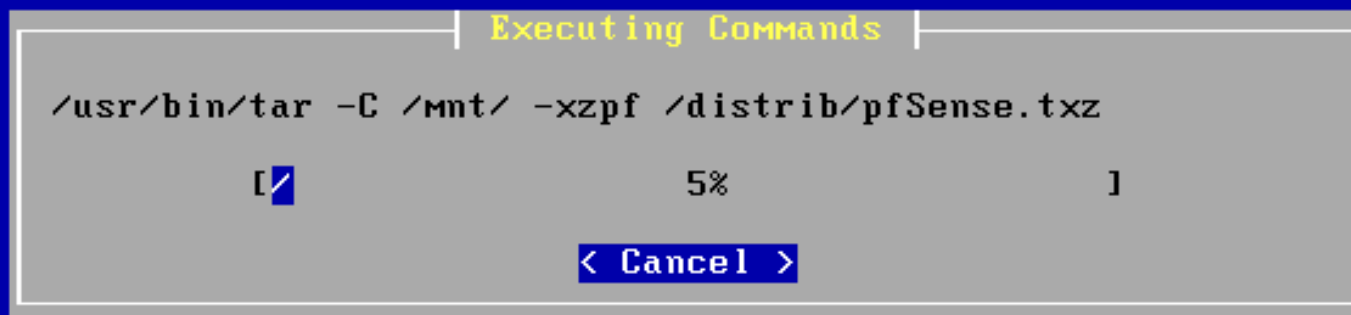
For Capacity, use 'M' to indicate megabytes, 'G' to indicate gigabytes, or a single '*' to indicate 'use the remaining space on the primary partition'.

Mountpoint	Capacity	
[/] [*] < Ins > < Del >
[swap] [2048M] < Ins > < Del >
		< Add >

< Accept and Create > < Return to Select Partition >
< Switch to Expert Mode >

Press F1 for Help

WAIT ...



Standard Kernel

Install Kernel

You may now wish to install a custom Kernel configuration.

< Standard Kernel >

< Embedded kernel (no UGA console, keyboard) >

Reboot

Reboot

This machine is about to be shut down.
After the machine has reached its
shutdown state, you may remove the CD
from the CD-ROM drive tray and press
Enter to reboot from the HDD.

< Reboot > < Return to Select Task >

pfSense is now rebooting.

```
pfSense is now rebooting
```

```
After the reboot is complete, open a web browser and  
enter https://192.168.1.1 (or the LAN IP Address) in the  
location bar.
```

```
You might need to acknowledge the HTTPS certificate if  
your browser reports it as untrusted. This is normal  
as a self-signed certificate is used by default.
```

```
*DEFAULT Username*: admin  
*DEFAULT Password*: pfsense
```

```
Rebooting in 5 seconds. CTRL-C to abort.  
Rebooting in 4 seconds. CTRL-C to abort.  
Rebooting in 3 seconds. CTRL-C to abort.  
Rebooting in 2 seconds. CTRL-C to abort.  
Rebooting in 1 second.. CTRL-C to abort.
```

```
pfSense is now rebooting.
```



Welcome to pfSense ...

```
tall -f pkg" recommended
pfSense (pfSense) 2.3.5-RELEASE amd64 Mon Oct 30 11:08:06 CDT 2017
Bootup complete

FreeBSD/amd64 (pfSense.localdomain) (ttyv0)

pfSense - Netgate Device ID: 01592ba7fe4b82ac4cba

*** Welcome to pfSense 2.3.5-RELEASE (amd64 full-install) on pfSense ***

WAN (wan)      -> em0          -> v4/DHCP4: 192.168.20.170/24
LAN (lan)      -> em1          -> v4: 192.168.1.1/24

0) Logout (SSH only)          9) pfTop
1) Assign Interfaces          10) Filter Logs
2) Set interface(s) IP address 11) Restart webConfigurator
3) Reset webConfigurator password 12) PHP shell + pfSense tools
4) Reset to factory defaults   13) Update from console
5) Reboot system              14) Enable Secure Shell (sshd)
6) Halt system                 15) Restore recent configuration
7) Ping host                   16) Restart PHP-FPM
8) Shell

Enter an option: █
```

Enter an option: 2

```
tall -f pkg" recommended
pfSense (pfSense) 2.3.5-RELEASE amd64 Mon Oct 30 11:08:06 CDT 2017
Bootup complete

FreeBSD/amd64 (pfSense.localdomain) (ttyv0)

pfSense - Netgate Device ID: 01592ba7fe4b82ac4cba

*** Welcome to pfSense 2.3.5-RELEASE (amd64 full-install) on pfSense ***

WAN (wan)      -> em0          -> v4/DHCP4: 192.168.20.170/24
LAN (lan)      -> em1          -> v4: 192.168.1.1/24

0) Logout (SSH only)          9) pfTop
1) Assign Interfaces          10) Filter Logs
2) Set interface(s) IP address 11) Restart webConfigurator
3) Reset webConfigurator password 12) PHP shell + pfSense tools
4) Reset to factory defaults    13) Update from console
5) Reboot system              14) Enable Secure Shell (sshd)
6) Halt system                15) Restore recent configuration
7) Ping host                  16) Restart PHP-FPM
8) Shell

Enter an option: 2█
```

Enter an option: 2

```
*** Welcome to pfSense 2.3.5-RELEASE (amd64 full-install) on pfSense ***
```

```
WAN (wan)      -> em0      -> v4/DHCP4: 192.168.20.170/24
LAN (lan)      -> em1      -> v4: 192.168.1.1/24
```

```
0) Logout (SSH only)          9) pfTop
1) Assign Interfaces          10) Filter Logs
2) Set interface(s) IP address 11) Restart webConfigurator
3) Reset webConfigurator password 12) PHP shell + pfSense tools
4) Reset to factory defaults   13) Update from console
5) Reboot system              14) Enable Secure Shell (sshd)
6) Halt system                15) Restore recent configuration
7) Ping host                  16) Restart PHP-FPM
8) Shell
```

```
Enter an option: 2
```

```
Available interfaces:
```

```
1 - WAN (em0 - dhcp, dhcp6)
2 - LAN (em1 - static)
```

```
Enter the number of the interface you wish to configure: 2
```

Enter: 192.168.101.254

```
WAN (wan)      -> em0      -> v4/DHCP4: 192.168.20.170/24
LAN (lan)      -> em1      -> v4: 192.168.1.1/24

0) Logout (SSH only)          9) pfTop
1) Assign Interfaces         10) Filter Logs
2) Set interface(s) IP address 11) Restart webConfigurator
3) Reset webConfigurator password 12) PHP shell + pfSense tools
4) Reset to factory defaults  13) Update from console
5) Reboot system             14) Enable Secure Shell (sshd)
6) Halt system               15) Restore recent configuration
7) Ping host                 16) Restart PHP-FPM
8) Shell

Enter an option: 2

Available interfaces:

1 - WAN (em0 - dhcp, dhcp6)
2 - LAN (em1 - static)

Enter the number of the interface you wish to configure: 2

Enter the new LAN IPv4 address. Press <ENTER> for none:
> 192.168.101.254
```

Enter: 24

```
5) Reboot system          14) Enable Secure Shell (sshd)
6) Halt system           15) Restore recent configuration
7) Ping host             16) Restart PHP-FPM
8) Shell
```

```
Enter an option: 2
```

```
Available interfaces:
```

```
1 - WAN (em0 - dhcp, dhcp6)
2 - LAN (em1 - static)
```

```
Enter the number of the interface you wish to configure: 2
```

```
Enter the new LAN IPv4 address. Press <ENTER> for none:
```

```
> 192.168.101.254
```

```
Subnet masks are entered as bit counts (as in CIDR notation) in pfSense.
```

```
e.g. 255.255.255.0 = 24
     255.255.0.0   = 16
     255.0.0.0     = 8
```

```
Enter the new LAN IPv4 subnet bit count (1 to 31):
```

```
> 24█
```

ENTER

```
Enter an option: 2
```

```
Available interfaces:
```

```
1 - WAN (em0 - dhcp, dhcp6)
2 - LAN (em1 - static)
```

```
Enter the number of the interface you wish to configure: 2
```

```
Enter the new LAN IPv4 address. Press <ENTER> for none:
```

```
> 192.168.101.254
```

```
Subnet masks are entered as bit counts (as in CIDR notation) in pfSense.
```

```
e.g. 255.255.255.0 = 24
     255.255.0.0   = 16
     255.0.0.0     = 8
```

```
Enter the new LAN IPv4 subnet bit count (1 to 31):
```

```
> 24
```

```
For a WAN, enter the new LAN IPv4 upstream gateway address.
```

```
For a LAN, press <ENTER> for none:
```

```
> █
```

ENTER

```
Available interfaces:
```

```
1 - WAN (em0 - dhcp, dhcp6)
2 - LAN (em1 - static)
```

```
Enter the number of the interface you wish to configure: 2
```

```
Enter the new LAN IPv4 address. Press <ENTER> for none:
> 192.168.101.254
```

```
Subnet masks are entered as bit counts (as in CIDR notation) in pfSense.
e.g. 255.255.255.0 = 24
     255.255.0.0   = 16
     255.0.0.0    = 8
```

```
Enter the new LAN IPv4 subnet bit count (1 to 31):
> 24
```

```
For a WAN, enter the new LAN IPv4 upstream gateway address.
For a LAN, press <ENTER> for none:
>
```

```
Enter the new LAN IPv6 address. Press <ENTER> for none:
> █
```


Enter: n

```
1 - WAN (em0 - dhcp, dhcp6)
2 - LAN (em1 - static)
```

```
Enter the number of the interface you wish to configure: 2
```

```
Enter the new LAN IPv4 address. Press <ENTER> for none:
> 192.168.101.254
```

```
Subnet masks are entered as bit counts (as in CIDR notation) in pfSense.
e.g. 255.255.255.0 = 24
     255.255.0.0   = 16
     255.0.0.0    = 8
```

```
Enter the new LAN IPv4 subnet bit count (1 to 31):
> 24
```

```
For a WAN, enter the new LAN IPv4 upstream gateway address.
For a LAN, press <ENTER> for none:
>
```

```
Enter the new LAN IPv6 address. Press <ENTER> for none:
>
```

```
Do you want to enable the DHCP server on LAN? (y/n) n
```

Enter: y

```
2 - LAN (em1 - static)
```

```
Enter the number of the interface you wish to configure: 2
```

```
Enter the new LAN IPv4 address. Press <ENTER> for none:
```

```
> 192.168.101.254
```

```
Subnet masks are entered as bit counts (as in CIDR notation) in pfSense.
```

```
e.g. 255.255.255.0 = 24
```

```
     255.255.0.0   = 16
```

```
     255.0.0.0    = 8
```

```
Enter the new LAN IPv4 subnet bit count (1 to 31):
```

```
> 24
```

```
For a WAN, enter the new LAN IPv4 upstream gateway address.
```

```
For a LAN, press <ENTER> for none:
```

```
>
```

```
Enter the new LAN IPv6 address. Press <ENTER> for none:
```

```
>
```

```
Do you want to enable the DHCP server on LAN? (y/n) n
```

```
Disabling IPv4 DHCPD...Disabling IPv6 DHCPD...
```

```
Do you want to revert to HTTP as the webConfigurator protocol? (y/n) y
```

ENTER

```
> 24
```

```
For a WAN, enter the new LAN IPv4 upstream gateway address.  
For a LAN, press <ENTER> for none:
```

```
>
```

```
Enter the new LAN IPv6 address. Press <ENTER> for none:
```

```
>
```

```
Do you want to enable the DHCP server on LAN? (y/n) n
```

```
Disabling IPv4 DHCPD...Disabling IPv6 DHCPD...
```

```
Do you want to revert to HTTP as the webConfigurator protocol? (y/n) y
```

```
Please wait while the changes are saved to LAN...
```

```
Reloading filter...
```

```
Reloading routing configuration...
```

```
DHCPD...
```

```
Restarting webConfigurator...
```

```
The IPv4 LAN address has been set to 192.168.101.254/24
```

```
You can now access the webConfigurator by opening the following URL in your web  
browser:
```

```
http://192.168.101.254/
```

```
Press <ENTER> to continue. █
```

*** Welcome to pfSense 2.3.5-RELEASE ***

The IPv4 LAN address has been set to 192.168.101.254/24
You can now access the webConfigurator by opening the following URL in your web browser:

`http://192.168.101.254/`

Press <ENTER> to continue.

pfSense - Netgate Device ID: 01592ba7fe4b82ac4cba

*** Welcome to pfSense 2.3.5-RELEASE (amd64 full-install) on pfSense ***

WAN (wan) -> em0 -> v4/DHCP4: 192.168.20.170/24
LAN (lan) -> em1 -> v4: 192.168.101.254/24

- | | |
|-----------------------------------|----------------------------------|
| 0) Logout (SSH only) | 9) pfTop |
| 1) Assign Interfaces | 10) Filter Logs |
| 2) Set interface(s) IP address | 11) Restart webConfigurator |
| 3) Reset webConfigurator password | 12) PHP shell + pfSense tools |
| 4) Reset to factory defaults | 13) Update from console |
| 5) Reboot system | 14) Enable Secure Shell (sshd) |
| 6) Halt system | 15) Restore recent configuration |
| 7) Ping host | 16) Restart PHP-FPM |
| 8) Shell | |

Enter an option: █